



BOYLE MODULAR REFRIGERATED COUNTERS

◆ **gwt** refrigerated counters range offers to the kitchen professional a whole set of functional solutions for their daily tasks, such as reduced space, difficult access, food safety and the need for steady, interruption-free production. All counters offer different options such as wheels, snack, gastronorm or pastry measures, different cabinet heights depending on their usage, etc. A whole set of solutions designed to provide a reliable and versatile product, which is environmentally friendly and great value for money.

Optimum performance in the most demanding kitchens. The front air outlet and the side insulation allow a lot of flexibility in the installation, improving performance, saving energy and avoiding compressor failures.

Features and benefits

HACCP compliance

Temperature and defrost regulated by a digital touch controller IP 65



Temperature monitoring capability (HACCP compliance)



Easy access for maintenance

AISI 304 stainless steel construction, visible exterior and interior

Compact insulated structure

Adjustable feet

Ecodesign concept

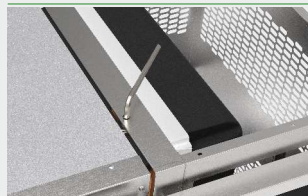
Low power consumption

High thermodynamic efficiency compressor

100% natural and 100% recyclable insulation

Climatic class 5 (40
[°C], 40% [RH])

Electrical connection
230 [V~]/50 [Hz]



Doors with opening
side changing possi-
bility



Forced evaporation
system

Evaporators treated
with anti-corrosion
polyester epoxy

Fast and easy to as-
semble



Ecological refrigerant
(HC R-290) (ODP=0
and GWP=3)



Automatic and effi-
cient condensate wa-
ter evaporation system

Reduced transporta-
tion costs

BY69LCU - Modular refrigerated counter left condensing unit 600900

BY69LRU - Modular refrigerated counter left remote unit 600900

BY6901D - Modular refrigerated counter door 600900

BY69I90 - Modular refrigerated counter internal 90 angle 600900

BY69I45 - Modular refrigerated counter internal 45 angle 600900

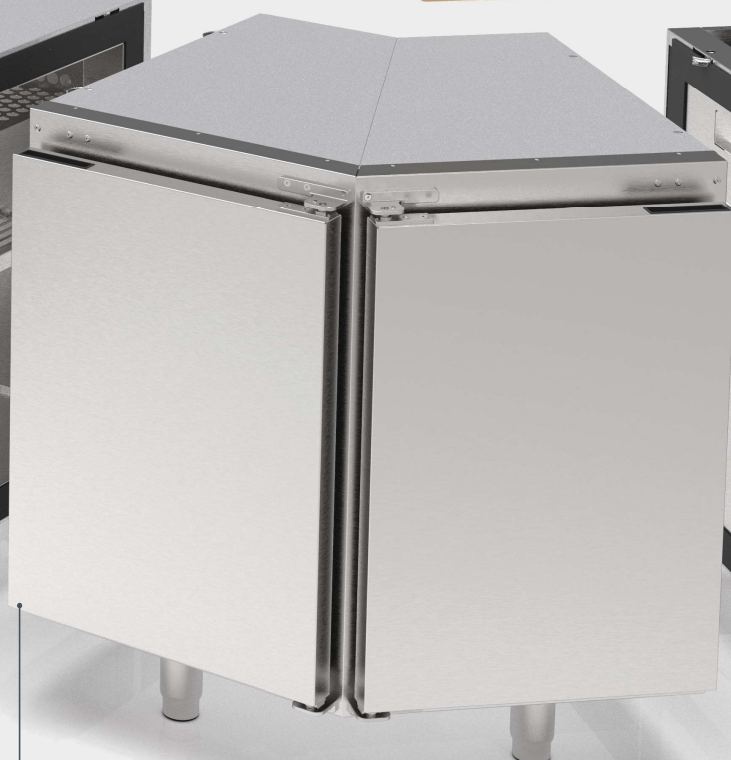
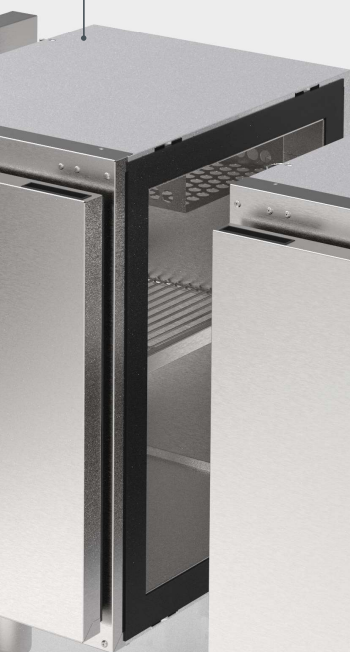


BY6901R - Modular refrigerated counter right end panel 600900

BY6901L - Modular refrigerated counter left end panel 600900

BY690RC - Modular refrigerated counter
door right side closed 600900

BY690LC - Modular refrigerated counter
door left side closed 600900



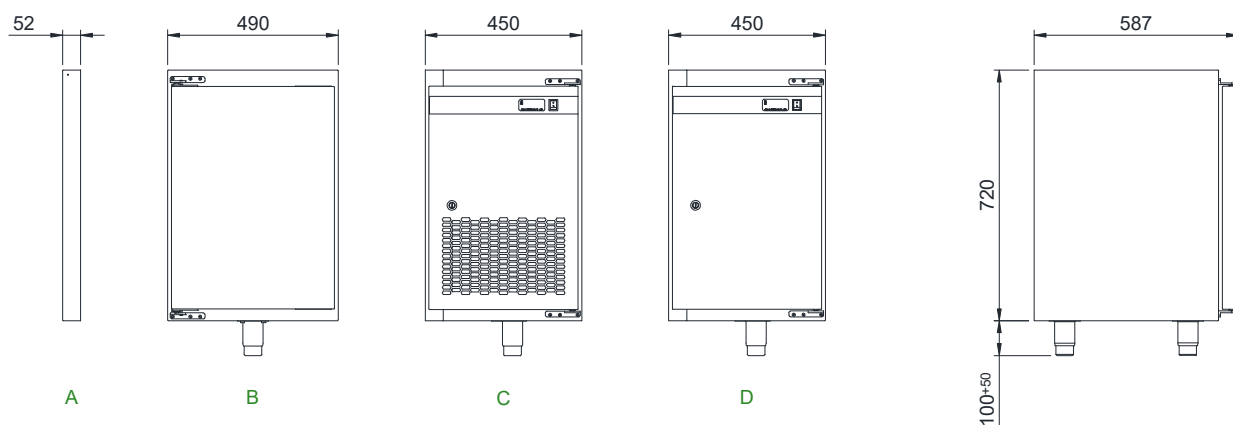
BY69E90 - Modular refrigerated counter
external 90 angle 600900

BY69E45 - Modular refrigerated counter
external 45 angle 600900

BY69RCU - Modular refrigerated counter
right condensing unit 600900

BY69RRU - Modular refrigerated counter
right remote unit 600900

BOYLE 600



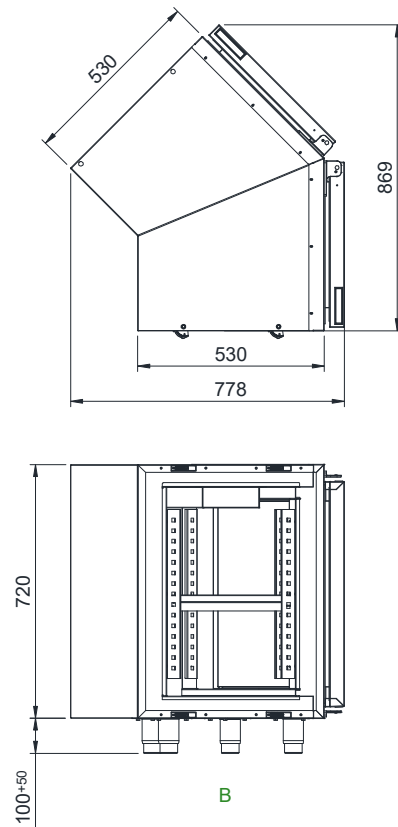
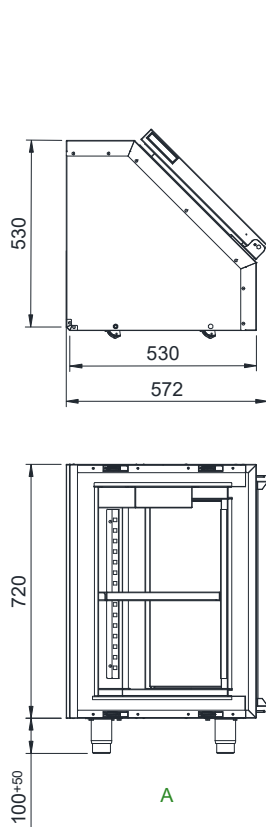
Reference	B	BY6901D	B	BY690LC	C	BY69LCU	D	BY69LRU	A	BY6901L	
Code		BYADO1000000		BYADC1100000		BYACU2000000		BYARU1100000		BYAEP1900000	
Reference	NA		B	BY690RC	C	BY69RCU	D	BY69RRU	A	BY6901R	
Code	NA			BYADC1000000		BYACU1100000		BYARU1000000		BYAEP1910000	
Outer dimension [mm]		490x587x820		490x587x820		450x587x820		450x587x820		52x587x720	
Cardboard packaging dimension [mm]		505x602x735		505x602x735		465x602x735		465x602x735		67x602x735	
Net weight [kg]		25		26		41		21		6	
Weight packing card [kg]		27		28		43		23		7	
Refrigerated useful volume [L]		123		119		NA		NA		NA	
Number of doors		1		1		NA		NA		NA	
Number of shelves/dimension [un]/[mm]		1/430x325		1/430x325		NA		NA		NA	
Type of condensation		NA		NA		Fan cooled		NA		NA	
Refrigerating fluid		NA		NA		R-290		R-134a		NA	
Type of cooling		Fan cooled		Fan cooled		Fan cooled		Fan cooled		NA	
EVCO Digital Controller		NA		NA		EV3292N7		EV3292N7		NA	
Defrosting		Automatic		Automatic		Automatic		Automatic		NA	
Operating Temperature [°C]		0/+10		0/+10		NA		NA		NA	
Max. Pressure LPS / HPS [bar]		NA		NA						NA	
Insulation		EIC		EIC		NA		NA		EIC	
Climate class ¹⁾		5		5		5		5		NA	
Power supply [V~]/([Hz])		NA		NA		230/50		230/50		NA	
Cooling power ²⁾ [W]		NA		NA		406		490		NA	
Electric power [W]		NA		NA		179		52		NA	

¹⁾ Test in conformity with EN ISO 23953

²⁾ Evaporating temperature= -10 [°C], Ambient temperature = +32 [°C]

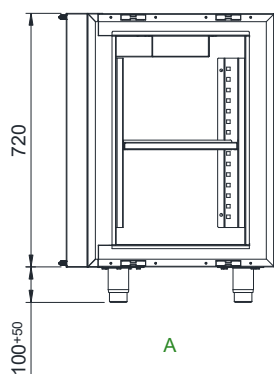
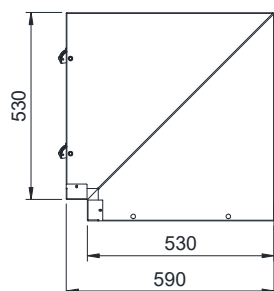
³⁾ Technical datasheet

All the dimensions are in [mm].

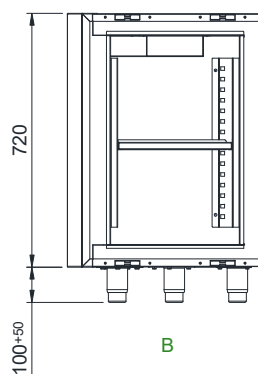
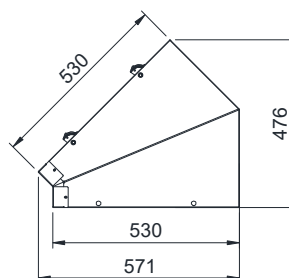


	A	BY69E90	B	BY69E45
		BYAEC9100000		BYAEC4100000
		NA		NA
		NA		NA
		TDS ³⁾		TDS ³⁾
		587x587x735		884x793x735
		28		40
		30		42
		82		146
		1		2
		2/Not standard		2/Not standard
		NA		NA
		NA		NA
		Fan cooled		Fan cooled
		NA		NA
		Automatic		Automatic
		0/+10		0/+10
		NA		NA
		EIC		EIC
		5		5
		NA		NA
		NA		NA
		NA		NA

BOYLE 600



A



B

Reference	A	BY69I90	B	BY69I45	
Code		BYAIC9100000		BYAIC4100000	
Reference		NA		NA	
Code		NA		NA	
Outer dimension [mm]		TDS ³⁾		TDS ³⁾	
Cardboard packaging dimension [mm]		605x605x835		605x605x835	
Net weight [kg]		31		20	
Weight packing card [kg]		33		22	
Refrigerated useful volume [L]		127		48	
Number of doors		0		0	
Number of shelves/dimension [un]/[mm]		2/Not standard		2/Not standard	
Type of condensation		NA		NA	
Refrigerating fluid		NA		NA	
Type of cooling		Fan cooled		Fan cooled	
EVCO Digital Controller		NA		NA	
Defrosting		Automatic		Automatic	
Operating Temperature [°C]		0/+10		0/+10	
Max. Pressure LPS / HPS [bar]		NA		NA	
Insulation		EIC		EIC	
Climate class ¹⁾		5		5	
Power supply [V~]/([Hz]		NA		NA	
Cooling power ²⁾ [W]		NA		NA	
Electric power [W]		NA		NA	

¹⁾ Test in conformity with EN ISO 23953

²⁾ Evaporating temperature= -10 [°C], Ambient temperature = +32 [°C]

³⁾ Technical datasheet

All the dimensions are in [mm].



Rua dos Bombeiros, 731A - Apartado 62
4730-752 Vila Verde - Portugal

Phone: (+351) 924 258 902
E-mail: gwt@gwtechnology.pt
Website: gwtechnology.pt

