



# BOYLE MODULAR REFRIGERATED COUNTERS

♦ **gwt** refrigerated counters range offers to the kitchen professional a whole set of functional solutions for their daily tasks, such as reduced space, difficult access, food safety and the need for steady, interruption-free production. All counters offer different options such as wheels, snack, gastronorm or pastry measures, different cabinet heights depending on their usage, etc. A whole set of solutions designed to provide a reliable and versatile product, which is environmentally friendly and great value for money.

Optimum performance in the most demanding kitchens. The front air outlet and the side insulation allow a lot of flexibility in the installation, improving performance, saving energy and avoiding compressor failures.

# Features and benefits

HACCP compliance

Temperature and defrost regulated by a digital touch controller IP 65



Temperature monitoring capability (HACCP compliance)



Easy access for maintenance

AISI 304 stainless steel construction, visible exterior and interior

Compact insulated structure

Adjustable feet

Ecodesign concept

Low power consumption

High thermodynamic efficiency compressor

100% natural and 100% recyclable insulation

Climatic class 5 (40  
[°C], 40% [RH])

Electrical connection  
230 [V~]/50 [Hz]



Doors with opening  
side changing possi-  
bility



Forced evaporation  
system

Evaporators treated  
with anti-corrosion  
polyester epoxy

Fast and easy to as-  
semble



Ecological refrigerant  
(HC R-290) (ODP=0  
and GWP=3)



Automatic and effi-  
cient condensate wa-  
ter evaporation system

Reduced transporta-  
tion costs

# BOYLE 700

BY79LCU - Modular refrigerated counter left  
condensing unit 700900

BY79LRU - Modular refrigerated counter left  
remote unit 700900

BY7901D - Modular refrigerated counter  
door 700900

BY79I90 - Modular refrigerated counter  
internal 90 angle 700900

BY79I45 - Modular refrigerated counter  
internal 45 angle 700900



BY7901R - Modular refrigerated counter  
right end panel 700900

BY7901L - Modular refrigerated counter  
left end panel 700900



BY790RC - Modular refrigerated counter  
door right side closed 700900

BY790LC - Modular refrigerated counter  
door left side closed 700900



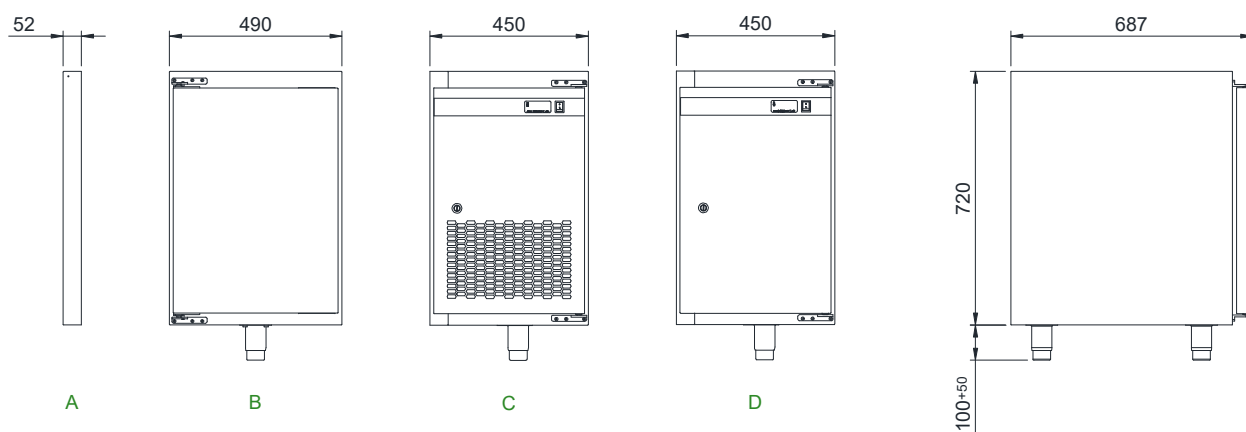
BY79E90 - Modular refrigerated counter  
external 90 angle 700900

BY79E45 - Modular refrigerated counter  
external 45 angle 700900

BY79RCU - Modular refrigerated counter  
right condensing unit 700900

BY79RRU - Modular refrigerated counter  
right remote unit 700900

# BOYLE 700



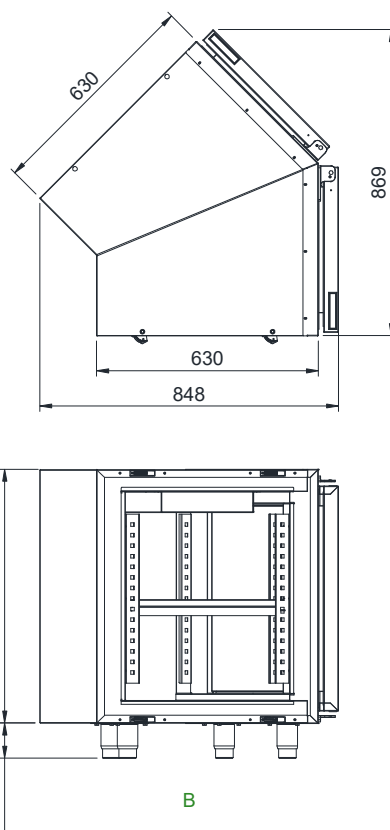
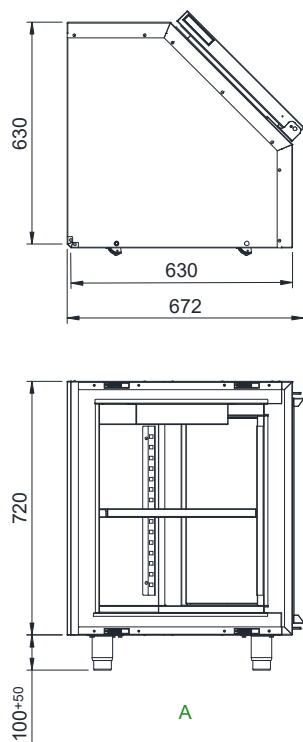
Reference	B	BY7901D	B	BY790LC	C	BY79LCU	D	BY79LRU	A	BY7901L	
Code		BYADO0000000		BYADC0100000		BYACU1000000		BYARU0100000		BYAEP0900000	
Reference	NA		B	BY790RC	C	BY79RCU	D	BY79RRU	A	BY7901R	
Code	NA			BYADC0000000		BYACU0100000		BYARU0000000		BYAEP0910000	
Outer dimension [mm]		490x687x820		490x687x820		450x687x820		450x687x820		52x687x720	
Cardboard packaging dimension [mm]		505x702x835		505x702x835		465x702x835		465x702x835		67x702x735	
Net weight [kg]		29		30		43		23		7	
Weight packing card [kg]		31		32		45		25		8	
Refrigerated useful volume [L]		153		148		NA		NA		NA	
Number of doors		1		1		NA		NA		NA	
Number of shelves/dimension [un]/[mm]		1/530x325		1/530x325		NA		NA		NA	
Type of condensation		NA		NA		Fan cooled		NA		NA	
Refrigerating fluid		NA		NA		R-290		R-134a		NA	
Type of cooling		Fan cooled		Fan cooled		Fan cooled		Fan cooled		NA	
EVCO Digital Controller		NA		NA		EV3292N7		EV3292N7		NA	
Defrosting		Automatic		Automatic		Automatic		Automatic		NA	
Operating Temperature [°C]		0/+10		0/+10		NA		NA		NA	
Max. Pressure LPS / HPS [bar]		NA		NA						NA	
Insulation		EIC		EIC		NA		NA		EIC	
Climate class <sup>1)</sup>		5		5		5		5		NA	
Power supply [V~]/([Hz])		NA		NA		230/50		230/50		NA	
Cooling power <sup>2)</sup> [W]		NA		NA		406		490		NA	
Electric power [W]		NA		NA		179		52		NA	

<sup>1)</sup> Test in conformity with EN ISO 23953

<sup>2)</sup> Evaporating temperature= -10 [°C], Ambient temperature = +32 [°C]

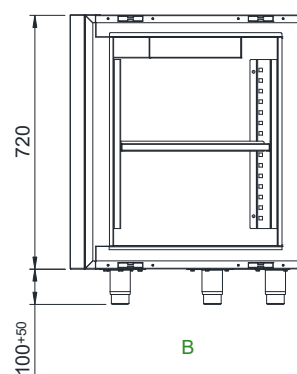
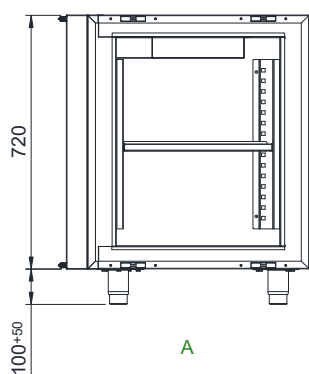
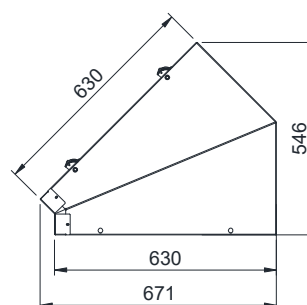
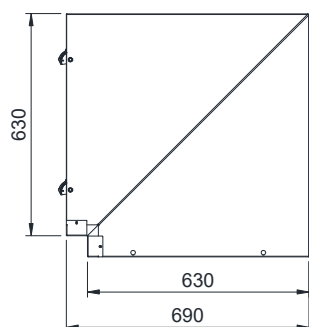
<sup>3)</sup> Technical datasheet

All the dimensions are in [mm].



	A	BY79E90	B	BY79E45
		BYAEC9000000		BYAEC4000000
		NA		NA
		NA		NA
		TDS <sup>3)</sup>		TDS <sup>3)</sup>
		687x687x735		884x863x735
		33		45
		35		47
		146		210
		1		2
		2/Not standard		2/Not standard
		NA		NA
		NA		NA
		Fan cooled		Fan cooled
		NA		NA
		Automatic		Automatic
		0/+10		0/+10
		NA		NA
		EIC		EIC
		5		5
		NA		NA
		NA		NA
		NA		NA

# BOYLE 700



Reference	A	BY79I90	B	BY79I45	
Code		BYAIC9000000		BYAIC4000000	
Reference		NA		NA	
Code		NA		NA	
Outer dimension [mm]		TDS <sup>3)</sup>		TDS <sup>3)</sup>	
Cardboard packaging dimension [mm]		705x705x735		561x686x735	
Net weight [kg]		36		24	
Weight packing card [kg]		38		26	
Refrigerated useful volume [L]		191		86	
Number of doors		0		0	
Number of shelves/dimension [un]/[mm]		2/Not standard		2/Not standard	
Type of condensation		NA		NA	
Refrigerating fluid		NA		NA	
Type of cooling		Fan cooled		Fan cooled	
EVCO Digital Controller		NA		NA	
Defrosting		Automatic		Automatic	
Operating Temperature [°C]		0/+10		0/+10	
Max. Pressure LPS / HPS [bar]		NA		NA	
Insulation		EIC		EIC	
Climate class <sup>1)</sup>		5		5	
Power supply [V~]/([Hz]		NA		NA	
Cooling power <sup>2)</sup> [W]		NA		NA	
Electric power [W]		NA		NA	

<sup>1)</sup> Test in conformity with EN ISO 23953

<sup>2)</sup> Evaporating temperature= -10 [°C], Ambient temperature = +32 [°C]

<sup>3)</sup> Technical datasheet

All the dimensions are in [mm].







Rua dos Bombeiros, 731A - Apartado 62  
4730-752 Vila Verde - Portugal

Phone: (+351) 924 258 902  
E-mail: [gwt@gwtechnology.pt](mailto:gwt@gwtechnology.pt)  
Website: [gwtechnology.pt](http://gwtechnology.pt)

